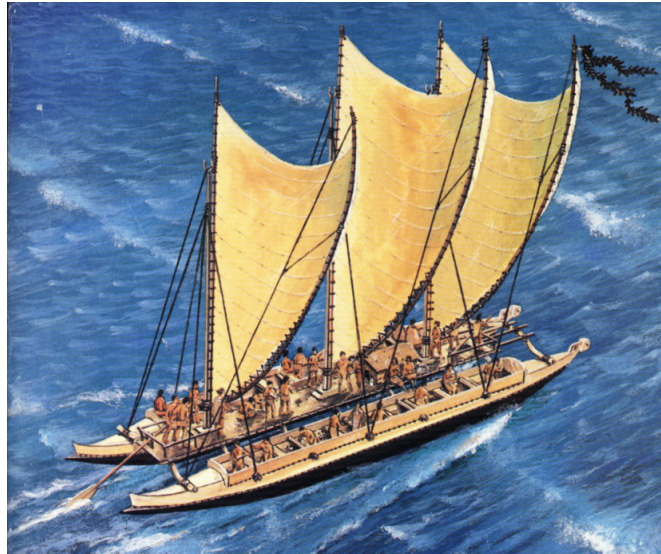




KAUPAPA MAHI



NGĀ IKIIKITANGA (Transportation) (REO MĀORI).

- Hangarau
- Tikanga-a-iwi
- Reo Māori



<p>KAUPAPA: Hangarau, Tikanga – a – iwi, Te Reo Māori</p> <p>WHENU: Pānui, Whakanui Mōhiotanga</p> <p>TE HOROPAKI: Te Ikiikitanga – Transportation – Te Waka, Te Kaipuke</p> <p>TAUMATA: Years 10 – 12</p>	
<p>ACHIEVEMENT OBJECTIVES:</p> <ul style="list-style-type: none"> • To investigate and identify the purposes and functions of specific technology. • To investigate and compare the impact of technology on societies. • To broaden knowledge base of a particular area of technology. 	
<p>ESSENTIAL SKILLS</p> <ul style="list-style-type: none"> • Research – gathering information • Numeracy • Conceptual understanding of ship / waka building. • Problem solving • Self management 	<p>RESOURCES</p> <ul style="list-style-type: none"> • Writing equipment • Māori Dictionary
<p>EXPECTED LEARNING OUTCOMES</p> <ol style="list-style-type: none"> 1. Enhance Te Reo Māori 2. To increase knowledge base of a specialist area. 3. Develop reasoning and analytical skills 4. Development of sequential thinking. 	<p>ASSESSMENT TASKS</p> <ol style="list-style-type: none"> 1. Vocabulary work 2. Reading for understanding 3. Drawing and comparing differences 4. Putting sentences into sequence.


NGOHE 1: He Mahi Kupu

E rārangi iho nei ētahi kupu mai i ngā tuhituhi whānui e whai ake ana. Kimihia ngā tikanga (Pākehā) o aua kupu, ka tuhia he whakamāramatanga.

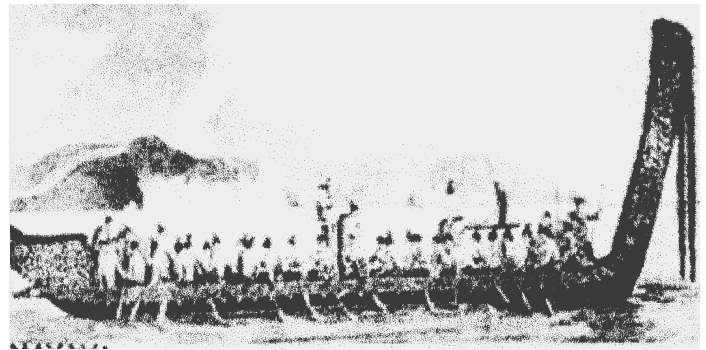
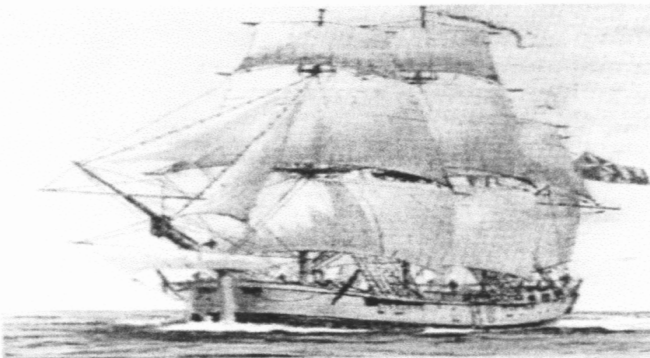
	TE KUPU	TE WHAKAMĀRAMA
1	Whakahaurua	
2	Huahua	
3	Pārongo	
4	Mitarau	
5	Hōhonu	
6	Tone	
7	O	
8	Takere	
9	Pāpaku	
10	Whakamaunu	



NGOHE 2

Whakahauruatia tō whārangi mahi.

I tētahi taha tāhia mai te waka **Endeavour**. I tērā atu taha tāhia mai he waka tauā Māori. Tuhia ngā ingoa o ngā wāhanga ka huahuatia mai kia tino kitea ngā rerekētanga

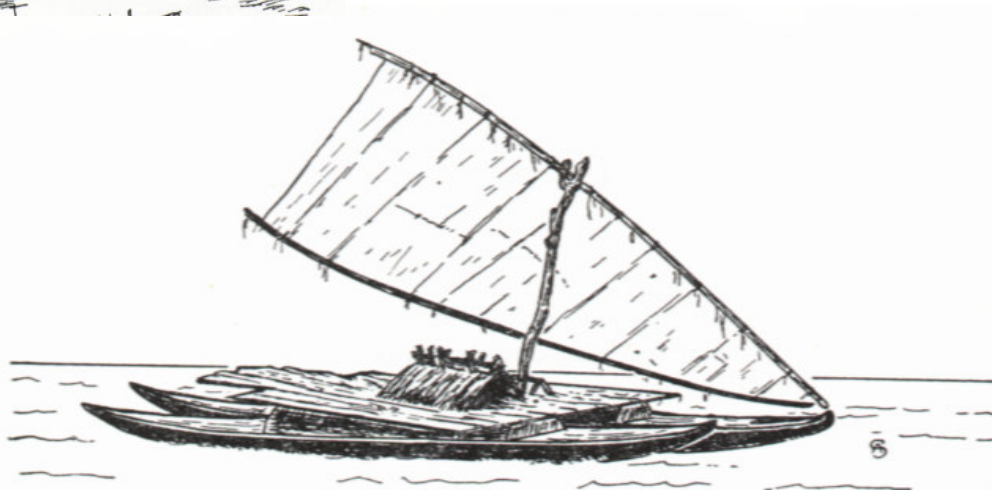
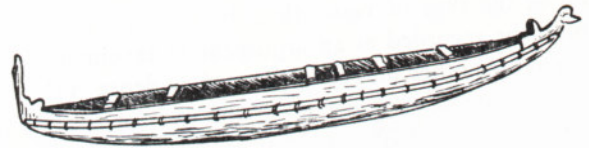
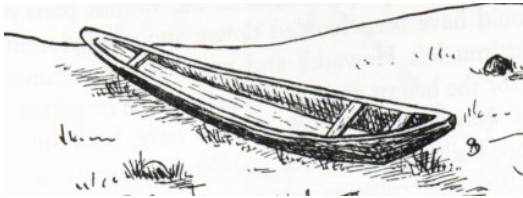


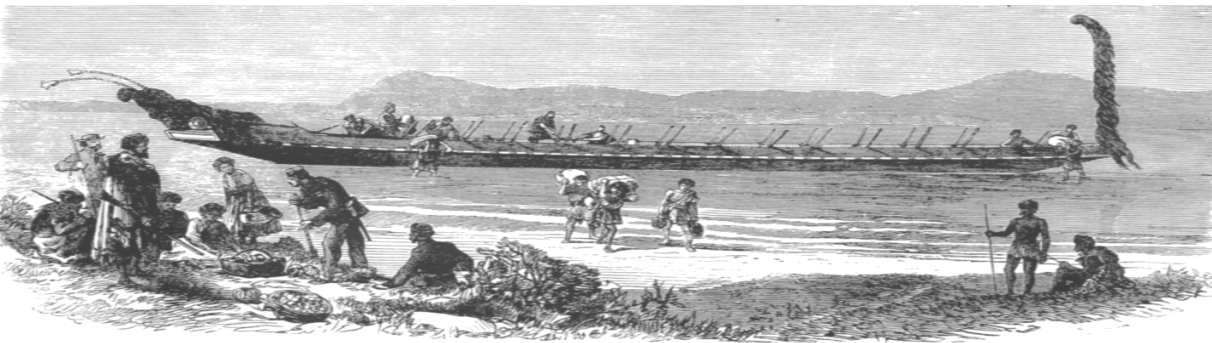
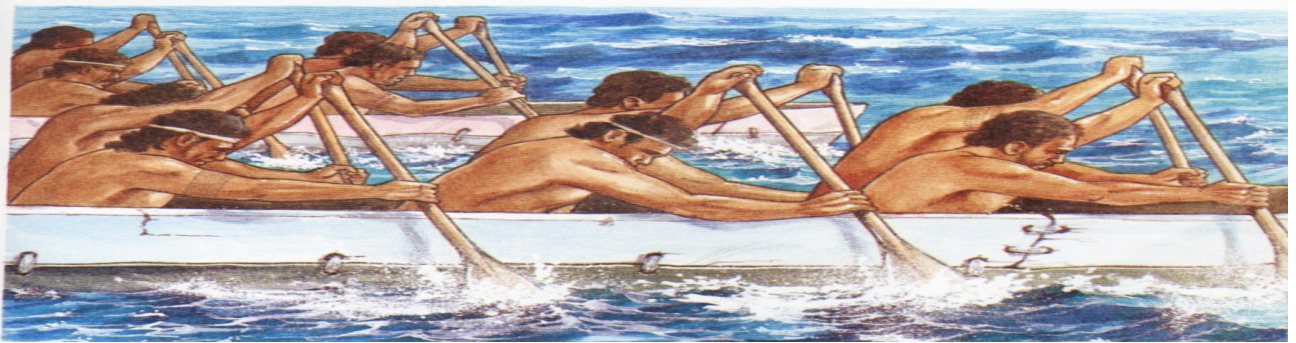
NGĀ PĀRONGO MO TE 'ENDEAVOUR

- Te roa - 32 mitarau
- Te whānui – 8.8 mitarau
- Te hōhonu i roto i te wai ite tīmatanga a tōna haere ko te 4.2 mitarau.
- Ko tōna taumaha he 3375 tōne
- Ko te 8 nōte te tere o tōna haere ki roto i te hau.
- Ko ngā ō ka kawea e ia ka taea te noho mo te rua tau.
- Ko tāna takere he pāpaku kia ngāwari ai te maunu me te whakatika .
- Ko ngā mea atu kei runga i a ia ko te 10 kenana (canons), 10 pū hurihuri (swivel guns) e 3 waka iti.

NGĀ PĀRONGO MO NGĀ WAKA TAUĀ

- He waka haere i te moana whānui.
- He waka kaha ki te haere moana ahakoa te taura muka noa iho ōna whakamau.
- Ētahi he waka hourua, ētahi he waka houtahi me te ama e piri atu ana i te taha.
- He ra ōna, he hoe ano hoki ōna mo te hoe wai hōhonu, ā, kei konā ngā kaihoe.
- He rahi te wāhi mo te nohoanga, kai me te inu mo ngā haerenga tawhititanga.
- He rahi te wāhi mo te kawewahine, tamariki hoki.
- E 7 note te tere o tāna haere ki roto i te hau.

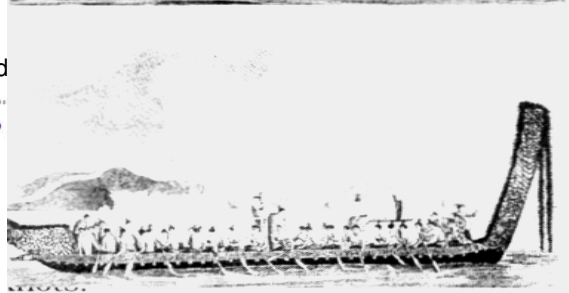


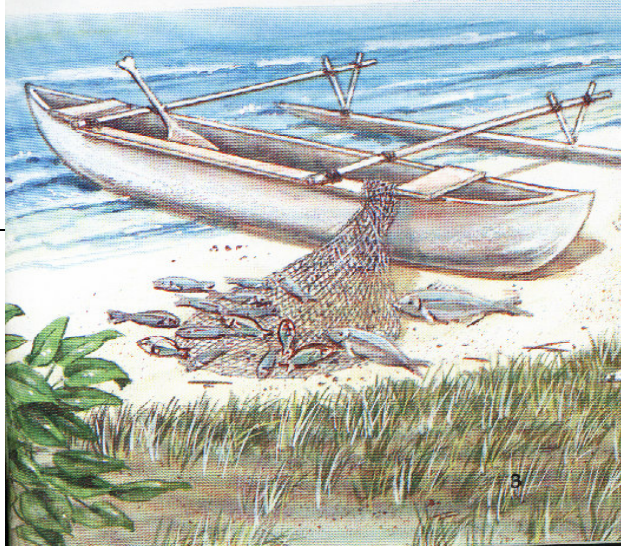


MAORI WAR CANOE AT TAURANGA, NEW ZEALAND



A project managed by Gardiner and







KO TE ENDEAVOUR	HE WAKA MĀORI





--	--

NGOHE 3 HE MAHI KUPU

Anei he rārangi kupu. Ko tāu mahi he honohono i te kupu ki tōna whakamārama tika.

	NGĀ KUPU		NGĀ WHAKAMĀRAMA.
1	Maunu	a	E marumaru ai tētahi wāhi i tēnei
2	Panipani	b	Ko te āhua tēnei o te haere a te waka. Ki te kore ia e whārite, ka hīrorirori haere ia, ka totohū
3	Takere	c	Ko te mahi mutunga tēnei o te hanga waka. Kia tautika te waka ka taea te tere.
4	Kāpia	d	Ko te mahi haroharo tēnei te tūporo rākau kia waka ai.
5	Taumaru	e	Ko te pākarukaru tēnei o te tūporo rākau
6	Tārai	f	Ko te whakarewa i te waka.
7	Tūporo rākau	g	Koinei te tangata whakariterite mā hea te haere o te waka.
8	Kai-whakatere	h	He tae tēnei – he āhua whero ki a tātou i ēnei ra.
9	Tiratau	i	Ko te wāhanga o mua o te waka.
10	Whārite	j	Ko ngā rawa ēnei e ora ai te iwi i a rātou e tere ana i te moana nui.
11	Ngatātata	k	Ko te mukumuku i tētahi mea ki runga i tētahi atu
12	Ō	l	Koinei te rākau e whakaūtia atu te rā o te waka.
13	Kōkōwai	m	Ko tēnei he mahi ‘ mikimiki ’ – pērā i te miki keke
14	Whakaranu(tia)	n	He mea ngitangita, he mea raparapa ka pania ki runga i te waka



15	Whakatautika	o	He wāhanga wahie tēnei kua whakaritea hei waka
----	---------------------	---	--

NGOHE 4

- He kōrero tēnei mo te mahi tārai waka.
 - Ko tāu mahi, he whakaraupapa mai ngā kōrero i raro iho nei ki te rārangi tōtika.
 - Tuhia te nama tika i roto i ngā pouaka i raro.
1. I te maunutanga o te waka ka eke te iwi katoa ki runga. Tāne, wāhine, tamariki.
 2. Ka pania te takere ki te kāpia kauri, kia kāpi katoa.
 3. Ka whakaūtia atu te taumaru.
 4. Ka tāraia tētahi tūpono rākau i te ngāhere.
 5. Ā, nā wai rā ka hipa ētahi marama, ka keria ake te rākau, ka waihotia kia pūhia e te hau kia uaina e te ua.
 6. Ka whiriwhiri te huarahi e ngā kai-whakatere.
 7. Ka tanumia atu hoki ētahi atu rākau he hanga i ngā wāhanga o te waka, arā ia, ko ngā **‘wash strakes’** kia **6**, ko ngā **tiratū** – kia **2**; ko ngā **‘sprints’** (he momo rākau. Ka whata whakapae – koina ngā wāhi noho **u** o ngā **rā** o te waka); ko ngā nohoanga o roto o te waka, ā, ko ngā papa hei hanga i te ihu o te waka.
 8. Ka whakamaunutia te waka kia whakamātauria tāna te whārite o tōna haere.



9. Ka tuku atu ngā mahi motuhake, tōtika ki ngā kaimahi waka.
10. Ka tanumia kia māro ai te rākau, kia kore e ngatātata.
11. Ka waihotia te tūporo rākau ki roto i te whare taumaru waka kia maroke ai.
12. Ā, ka toia atu ngā tūporo rākau ki te one.
13. Ka ūtaina atu ngā ō.
14. Katahi, ka pania (ka peitahia) ki te kōkōwai – he mea whakararu mai i te hinu o te mako me te oneone.
15. Ka maroke mai ana ka whakatautikangia tāna haere, ka whākunga ōna herehere, ā, rite mai ana.

1	2	3	4	5	6	7	8	9	10	11	12	13	14	15



TEACHER'S COPY

	NGĀ KUPU		TŌNA WHAKAMĀRAMA
1	Maunu	f	Ko te whakarewa I te waka
2	Panipani	k	Ko te mukumuku i tētahi me ki runga i tētahi atu
3	Tākere	i	Ko te wāhanga o mua o te waka
4	Kāpia	n	He mea ngitangita he mea raparapa ki runga i te waka
5	Taumaru	a	E marumaru ai tētahi wāhi i tēnei
6	Tārai	d	Ko te mahi haroharo tēnei i te tūporo rākau kia waka ai
7	Tūporo rākau	o	He wāhanga wahie tēnei kua whakaritea hei waka
8	Kai-whakaterē	g	Koinei te tangata whakariterite mā hea te haere o te waka
9	Tiratū	l	Koinei te rākau e whakaūtia atu te rā o te waka
10	Whārite	b	Ko te āhua tēnei o te haere ā te waka Ki te kore ia e whārite, ka hiroriori haere ia, ka totohū
11	Ngatātata	e	Ko te pākarukaru tēnei o te tūporo rākau
12	Ō	j	Ko ngā rawa ēnei e ora ai te iwi i a rātou e tere ana i te moana nui
13	Kōkōwai	h	He tae tēnei – he āhua whero ki a tātou i ēnei rā
14	Whakarānu	m	Ko tēnei he mahi 'mikimiki' – pērā i te miki keke.
15	Whakatautika	c	Ko te mahi mutunga tēnei o te hanga waka...Kia tautika te waka ka taea te tere.